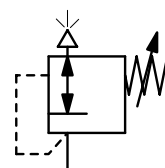


|                          |   |
|--------------------------|---|
| <b>Description</b>       | The back pressure regulator is a high-flow, high-precision pneumatic relief valve with adjustable setpoint. It provides protection against overpressure in the downstream section of pneumatic systems. A convoluted diaphragm provides the sensitivity for venting to the atmosphere in response to the slightest upstream change. |
| <b>Media</b>             | compressed air or non-corrosive gases   |
| <b>Overpressure</b>      | max. 17 bar   |
| <b>Adjustment</b>        | by handwheel with locknut   |
| <b>Gauge port</b>        | G $\frac{1}{4}$ on both sides of the body, screw plugs supplied   |
| <b>Mounting position</b> | any   |
| <b>Temperature range</b> | 0 °C to 70 °C / 32 °F to 158 °F,<br>for appropriately conditioned compressed air down to -40 °C / -40 °F  |
| <b>Material</b>          | Body: aluminium die-cast<br>Elastomer: NBR/Buna-N<br>Inner valve: stainless steel and brass   |



**G $\frac{1}{4}$  /  $\frac{1}{4}$ " up to  $\frac{1}{2}$ " NPT**  
**10... 140 mbar/10 bar**

| Dimensions |    |    | Relief capacity | Over-pressure | Connection thread | Adjustment range | Order number |
|------------|----|----|-----------------|---------------|-------------------|------------------|--------------|
| A          | B  | C  | l/min*1         | max. bar      | G                 | bar              |              |
| mm         | mm | mm |                 |               |                   |                  |              |

| Precision back pressure regulator |     |    |      |    |    | overpressure max. 17 bar | DB240     |
|-----------------------------------|-----|----|------|----|----|--------------------------|-----------|
| 67                                | 154 | 19 | 1100 | 17 | G¼ | 0.01... 0.14             | DB240-020 |
|                                   |     |    |      |    |    | 0.01... 1.0              | DB240-02A |
|                                   |     |    |      |    |    | 0.01... 2.0              | DB240-02B |
|                                   |     |    |      |    |    | 0.07... 4.0              | DB240-02C |
|                                   |     |    |      |    |    | 0.14... 10               | DB240-02D |



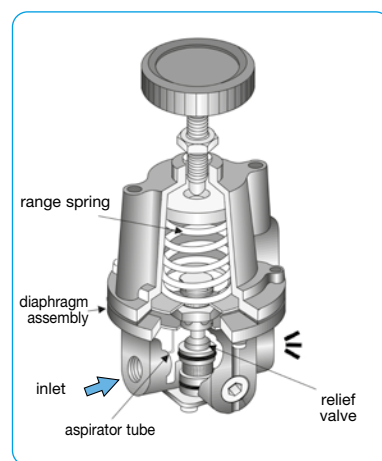
DB240

## Special options, add the appropriate letter

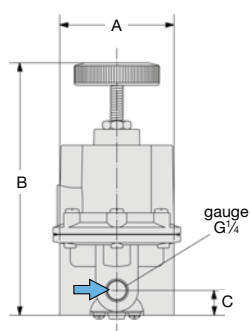
|                                      |   |              |
|--------------------------------------|---|--------------|
| <b><math>\frac{1}{4}</math>" NPT</b> | connection thread   | DB240-02 . N |
| <b><math>\frac{3}{8}</math>" NPT</b> | connection thread   | DB240-03 . N |
| <b><math>\frac{1}{2}</math>" NPT</b> | connection thread, recommended for mbar range             | DB240-04 . N |
| <b>tamper-proof cap</b>              | aluminium, adjustment by screwdriver, total height 157 mm | DB240-0 . T  |

## Accessories, enclosed

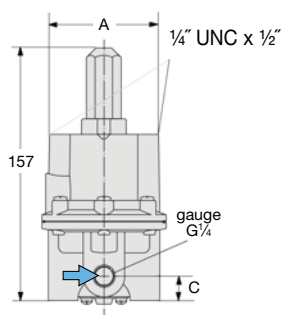
|                         |  |                     |
|-------------------------|--|---------------------|
| <b>pressure gauge</b>   | Ø 50 mm, 0...*2 bar, G $\frac{1}{4}$ , Bourdon tube, from 1 bar on | <b>MA5002-...*2</b> |
|                         | Ø 63 mm, 0...160 mbar, G $\frac{1}{4}$ , capsule type              | <b>MA6302- C2</b>   |
| <b>mounting bracket</b> | made of steel  | <b>BW00-33</b>      |



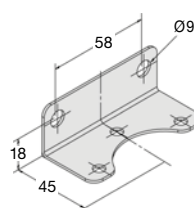
cross-section



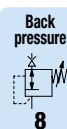
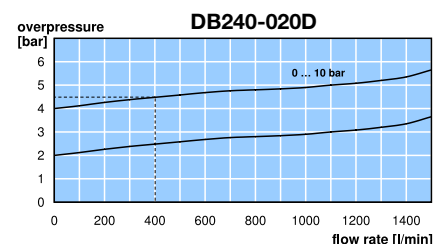
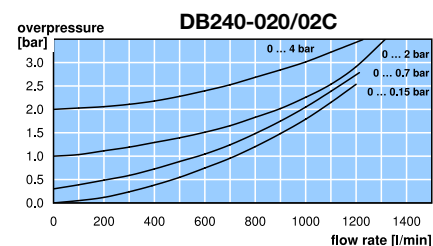
DB240



DB240-...T  
with tamper-proof cap



BW00-33



\*1 at 5 bar overpressure and open outlet

\*2 01 = 0...1 bar, 02 = 0...2.5 bar, 06 = 0...6 bar, 10 = 0...10 bar, 16 = 0...16 bar

Gauges: see chapter for measuring devices

PDF CAD  
www.aircom.net

\* Product group



Order example:  
DB240-020